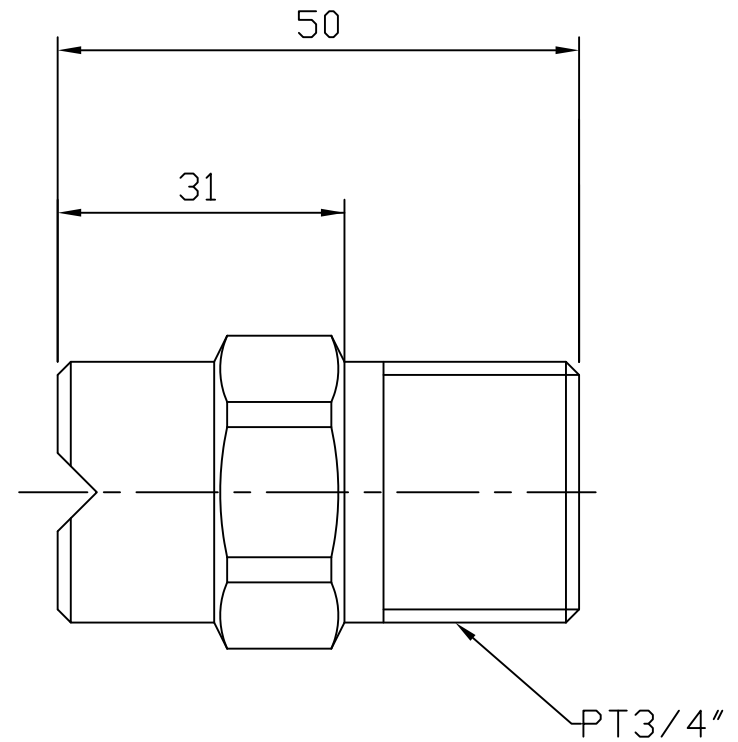
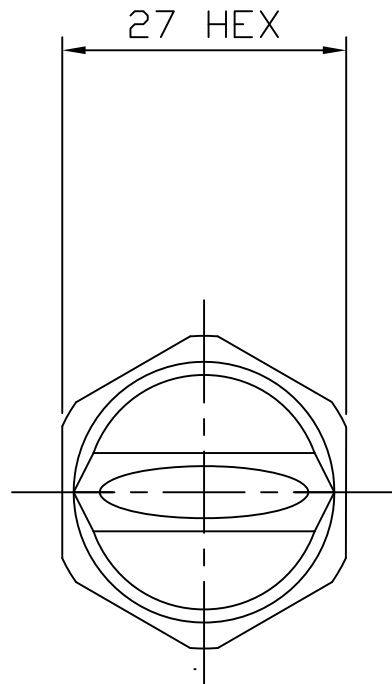

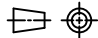


SYM.	Revision & Description	DATE	DRAWN	CHECKED	APP.
△					
△					
△					

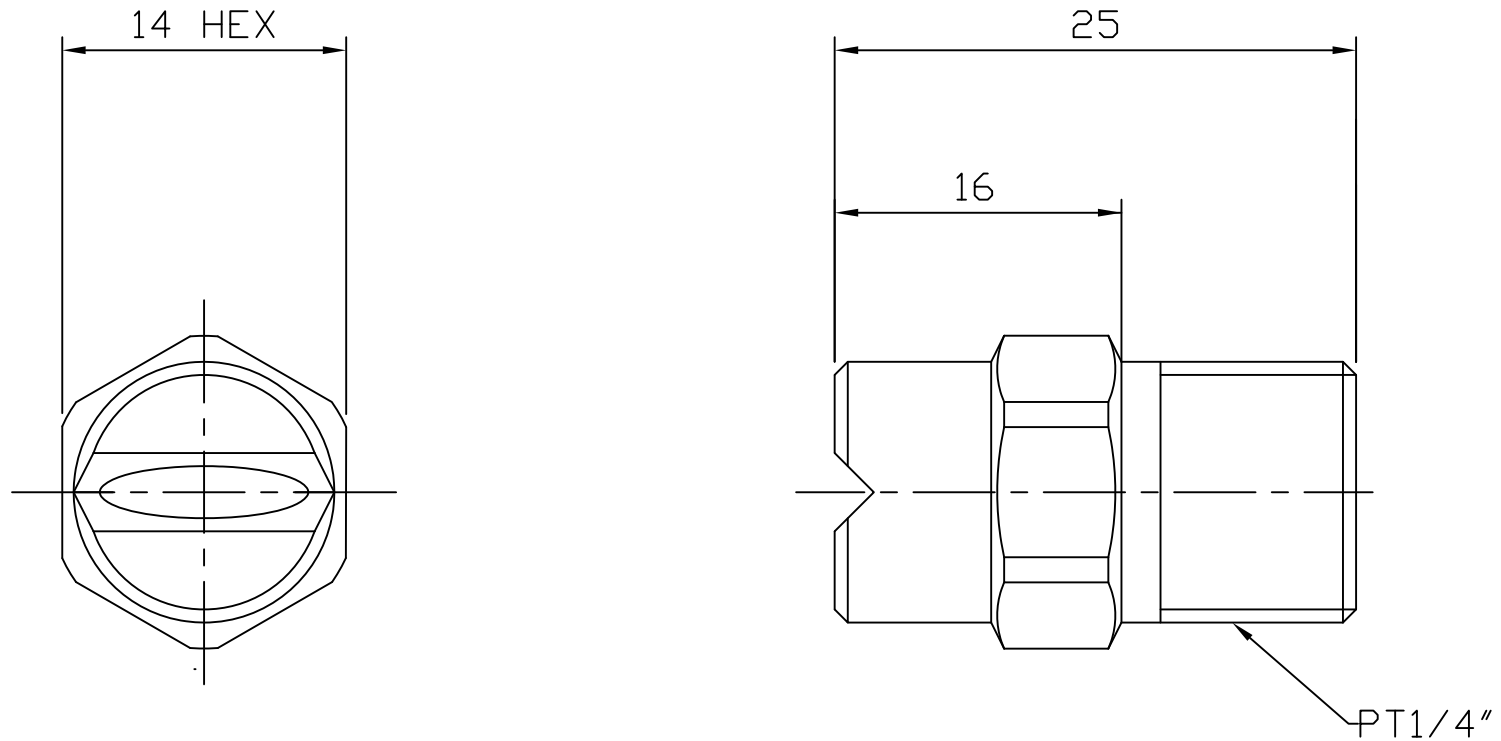


FLAT SPRAY NOZZLE

MODEL NO.	PRESSURE (bar)	FLOW RATE (L/min)	SPRAY ANGLE (°)	MATERIAL
3/4VF300580	5	80	30	STS303


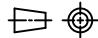
NO.	DESCRIPTION	MATERIAL	Q'TY	REMARKS
DRAWING TITLE				
FLAT SPRAY NOZZLE				
 TOTAL TECH CO.,LTD. SEOUL KOREA TEL:(02)2088-7767 FAX:(02)2088-3323				
DRAWN BY	DESIGNED BY	CHECKED BY	APPROVED BY	DATE
J.M KIM	J.M KIM	C.G KIM		19.06.17
SCALE	PROJECTION	DRAWING NO.		
		TT190616-301		

SYM.	Revision & Description	DATE	DRAWN	CHECKED	APP.
△					
△					
△					

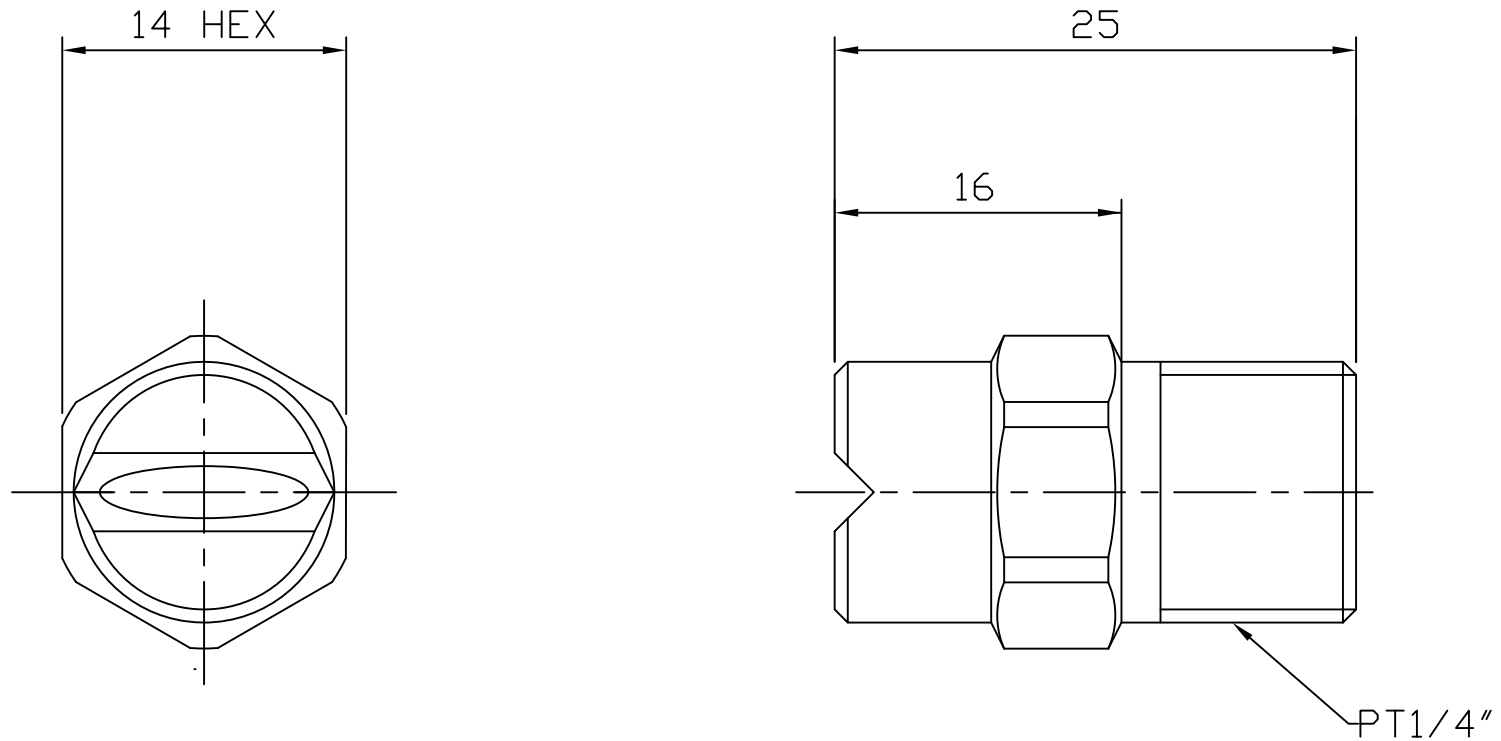


FLAT SPRAY NOZZLE

MODEL NO.	PRESSURE (bar)	FLOW RATE (L/min)	SPRAY ANGLE (°)	MATERIAL
1/4VF600532	5	32	60	STS303


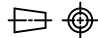
NO.	DESCRIPTION	MATERIAL	Q'TY	REMARKS
DRAWING TITLE				
FLAT SPRAY NOZZLE				
 TOTAL TECH CO.,LTD. SEOUL KOREA TEL:(02)2088-7767 FAX:(02)2088-3323				
DRAWN BY	DESIGNED BY	CHECKED BY	APPROVED BY	DATE
J.M KIM	J.M KIM	C.G KIM		19.06.17
SCALE	PROJECTION	DRAWING NO.		
		TT190616-302		

SYM.	Revision & Description	DATE	DRAWN	CHECKED	APP.
△					
△					
△					



FLAT SPRAY NOZZLE

MODEL NO.	PRESSURE (bar)	FLOW RATE (L/min)	SPRAY ANGLE (°)	MATERIAL
1/4VF200535	5	35	20	STS303

NO.	DESCRIPTION	MATERIAL	Q'TY	REMARKS
DRAWING TITLE				
FLAT SPRAY NOZZLE				
 TOTAL TECH CO.,LTD. SEOUL KOREA TEL:(02)2088-7767 FAX:(02)2088-3323				
DRAWN BY	DESIGNED BY	CHECKED BY	APPROVED BY	DATE
J.M KIM	J.M KIM	C.G KIM		19.06.17
SCALE	PROJECTION	DRAWING NO.		
		TT190616-303		